

Databases- Midwives Research


[North Coast Hospitals](#)
[Midwives Database A - L](#)
[Midwives Database M-Z](#)
[NSW Midwives 1788-1900](#)

New South Wales North Coast Midwives and their Hospitals 1890s - 1940.

The main towns and centres covered in these lists include Armidale/Uralla, Ballina, Alstonville, Broadwater, Bangalow, Byron Bay, Nimbin, Bellingen, Dorrigo/Guy Fawkes, Brunswick Heads, Mullumbimby, Casino and surrounding areas, Coffs Harbour/Urunga, Kempsey, Smithtown, South West Rocks, Port Macquarie, Kyogle and surrounding areas, Lismore and surrounding areas, Macksville, Maclean, Ulmarra, Murwillumbah/Tweed.

I am no longer collecting information on these midwives but have passed the data on to the following family history and local historical societies who will continue the research and should also be able to help with inquiries. Please contact them as follows or email me on noelinekyle@gmail.com for more information.

Kempsey, Port Macquarie, Smithtown, South West Rocks, Armidale, Uralla Midwives and Hospitals, these records remain with me and I will continue to collect data and hope to publish a record some time in the future, contact me via email: noelinekyle@gmail.com

Leave a comment on my facebook page 

Or write to me at: 1547 Ocean Drive, Lake Cathie, NSW, 2445

For the remainder of the midwives/hospitals in the list above the following societies should be contacted:

Grafton Midwives and their Hospitals

Research Officer
Clarence River Historical Society
P.O. Box 396
GRAFTON. 2460
NSW
02 66425212
clarencehistory@bigpond.com
www.clarencehistory.org.au

Brunswick, Broadwater, Wardell, Woodburn, Mullumbimby, Byron Bay, Bangalow, Nimbin, Ballina, Coraki, Alstonville, Murwillumbah, Tweed, The Channon Midwives and Hospitals

Richmond Tweed Family History Society
Research Officer
P.O. Box 817



Ballina NSW
2874
02 66866197
<http://rtfhs.org.au/>

Lismore Midwives and Hospitals

Richmond River Historical Society Inc
Research Centre
PO Box 467
Lismore NSW
2480
02 66219993
research@richhistory.org.au
www.richhistory.org.au

Casino and Kyogle Midwives and Hospitals

Casino & District Family History Group
Research Officer
PO Box 586
Casino NSW
2470
02 66628114
casdfhg@australis.net
<http://www.rootsweb.ancestry.com/~auscdfhg/>

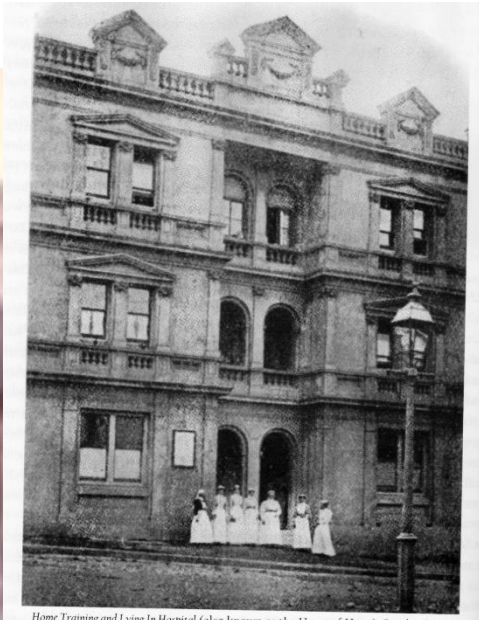
Coffs Harbour, Urunga, Bowraville and Macksville, Dorrigo, Guy Fawkes Midwives and Hospitals

Coffs Harbour Family History Society Inc.
Research Centre
PO Box 2057
Coffs Harbour NSW
2450
02 66516126
coffsgenie@gmail.com
<http://www.rootsweb.ancestry.com/~nswchfhs/contacts.html>

Maclean and Ulmarra Midwives and Hospitals

Maclean District Historical Society Inc
PO Box 257
Maclean NSW
2463
02 66453416
museum@macleanhistory.org.au
www.macleanhistory.org.au





Home Training and Lying In Hospital (also known as the Home of Hope), Stanley Street, Newtown, from *The Rescue*, December, 1900. From a copy held in the Mitchell Library, State Library of New South Wales.

[North Coast Hospitals](#)
[Midwives Database A - L](#)
[Midwives Database M-Z](#)
[NSW Midwives 1788-1900](#)

